


MEET THE 2025 TEACHER



Aims of the Evening...

To provide an informal opportunity to meet each other, introduce the new school year and answer any initial queries you may have





If you
have any
queries

cummins@salesbury
lancs.sch.uk

Teacher who works
in our class

Miss E. Cummins

Teaching Assistants

Miss Berry

Miss Garmston (Monday to
Wednesday)

Mrs Barton (Thursday & Friday)



Our Class

- Our class has 13 Year One pupils and 10 Reception pupils
- We run as a mixed EYFS / Key Stage One unit across Star and Moon
- Children all have access to continuous provision in both classrooms and the shared outdoor area
- Teaching will include short whole class inputs, group work and opportunities to engage in learning with adults in areas of provision
- We will be gradually introducing more formal whole-class learning



Curriculum

- Strong, bespoke approach to teaching the National curriculum - meaningful links across the curriculum where these can be made, use of visits and outdoor learning
- Mathematics and English taught daily and interwoven across curriculum
- Teaching children how to become more independent, successful learners, nurturing a growth mind-set in all our children
- Give children ownership of their learning - many opportunities for challenge, independence
- Use assessment as a tool to see where children are, to find out what their gaps and next steps are and to inform future learning

Knowledge Organiser



- Knowledge Organisers will be sent out periodically through the year
- These set out the minimum knowledge and vocabulary children must learn within our theme for the half-term
- This knowledge will be enhanced by much greater learning in class
- Please help your children learn the facts and vocabulary - make it fun!
- Knowledge Organisers will be added to the class page of the website so we can keep remembering and recalling learning from earlier in the year

Knowledge Organiser



Salesbury Super 6 Knowledge Organiser for KS1

Learning Focus: History, (Shelters, Houses & Homes)

Key knowledge to learn

- 1 Similarities and differences of shelters, houses and homes from the past to the present day.
- 2 Materials used to make shelters, houses and homes from the past to the present day.
- 3 The change in structure of shelters, houses and homes.
- 4 The impact the Great Fire of London had on homes that were built after this period.
- 5 That we find out about the past from different sorts of evidence.
- 6 To have an understanding of the 'ways of life' in different periods throughout history.

Vocabulary

Past	Something that has already happened
Present/Future	Happening now/has not happened yet
Chronology	The order in time in which events occurred
Compare	Things that are the same/different
Features	Parts/details that stand out
Structure	The frame of a house that gives it support and shape



You can find out more by:-

<https://www.fireoflondon.org.uk>

[The Great Fire of London - BBC Bitesize](#)



Our Curriculum Unit this term

Chronology of Toys and Games

- History focus including a Victorian Theme Day (more details to follow)
- Science focus on materials

Exploration of stories, poems and rhymes that link

Visit to Blackburn Museum in October (more details to follow)

Ongoing Assessments

- Progress is tracked for every child on a termly basis in mathematics, reading and writing. This helps us to monitor progress throughout the year and adapt teaching and support where needed.
- Most children are taught within the year group expectations for the year group, children will be assessed at three different points in the school year against the following criteria: entering, developing, secure in meeting year group expectations. Children are not expected to be secure until the end of year but are expected to make progress.
- Children who are not ready for year group expectations will be supported to make progress towards these, children who demonstrate a strong secure understanding of expectations will be challenged through problem solving, deepening understanding, applying knowledge learned and creative learning opportunities
- Support programmes are used to support small groups of children throughout the school as and when needed
- You will be given a termly report including a summary of their learning attitudes and assessments prior to Parents Evening, these help you prepare for Parents Evening and formulate any questions you do have

Reading

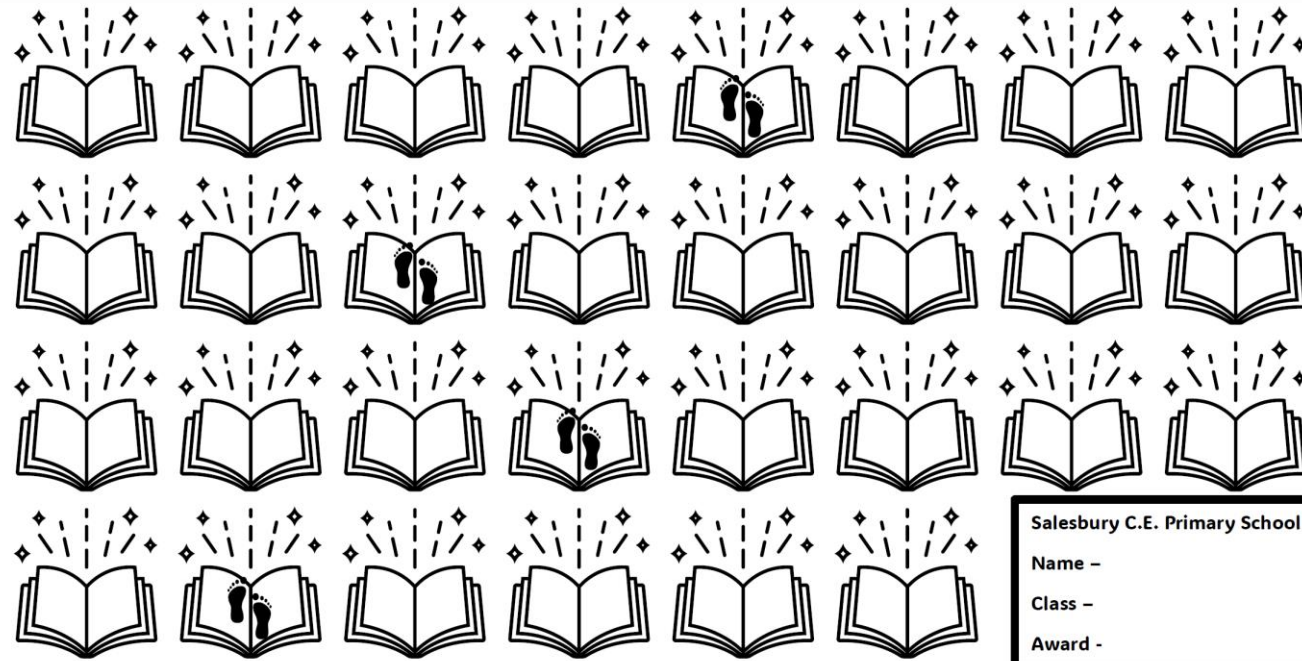


- Whole Class Reading taught each day
- Reading at home - invaluable, please sign the diary each time you hear your child read
- Bedtime story Bear (sent home Mondays and Wednesdays each week)
- Story at the end of each day
- Reading area within our classroom
- Weekly visit to the library and library book to take home
- Daily Phonics lesson
- Reading across the curriculum
- Parent volunteer helpers are welcome - we ask parents to volunteer at drop off time at 8.45 - 9.15am to listen to individuals read. Please let the school office know, if interested. DBS Clearance will be required but can be arranged by the school

Reading



- Reading books will be changed every **Monday**
- Please sign reading diaries when books have been read
- Reading their book **MORE THAN ONCE** during the week helps children to develop reading fluency and gives them opportunity to comprehend what they have read



Salesbury C.E. Primary School

Name -

Class -

Award -

Practising reading aloud will really improve your reading, writing, spelling and vocabulary as well as being a wonderful thing to do. Each day, you read at home ask an adult to initial and date one of the books above. When you reach a book that has footprints, put your feet up and ask an adult to read to you! Once all the books are completed, please return to school - you will be added to the class reading chart and receive your reading award in Celebration Worship! This year, we are exploring some great book characters.

Happy Reading!

1.	The Elmer Award - Elmer	Certificate & Bookmark
2.	The Charlotte's Web Award - Wilbur	Certificate & Bookmark
3.	The Winnie the Pooh Award - Winnie the Pooh	Certificate & Pencil
4.	The Matilda Award - Matilda	Certificate & Bookmark
5.	The Robin Hood Award - Robin Hood	Certificate & Bookmark
6.	The Rooftoppers Award - Sophie	Certificate & Bookmark
7.	The Beowulf Award - Beowulf	Certificate & Badge

Reading Gameboard

Research shows regular home reading, especially reading aloud, really does make a difference.

Gameboard to encourage regular reading. Please initial each day your child reads at home, when they reach a footprint, it is your turn to read to them. We have a visual in class to see how children are progressing. This is something all children can do - practice!

The benefits of reading as children grow

0-2 years

- Bonding and building relationships
- Speech and language
- Foundational thinking

3-4 years

- School readiness
- Wellbeing and resilience
- Emergent literacy
- Thinking, memory and creativity

5-8 years

- General knowledge and attainment
- Wellbeing, resilience and attainment
- Language and literacy
- Thinking, memory, attention and creativity
- Reading fluency

9+ years

- General knowledge and attainment
- Wellbeing, empathy and emotional intelligence
- Language and literacy
- Thinking, memory and creativity
- Reading fluency

Homework



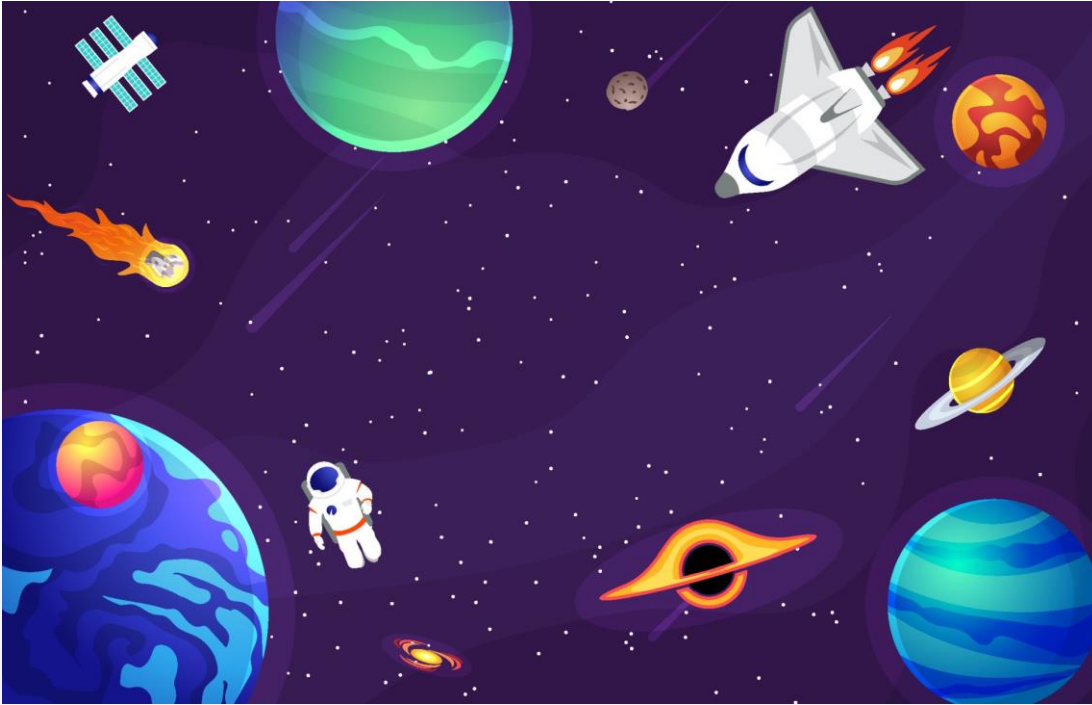
- A homework grid will be given out each term
- This will also be available on our class page on the school website
- Any homework tasks completed can be sent into school before the end of each term, if it is a more practical task you can email me photos or videos

Spelling



- The Spelling Shed scheme is used to teach spelling across the school.
- Each week we will teach a new spelling pattern.
- Spelling shed tasks will be set weekly on a Friday, information about this will be on the weekly newsletter.
- Login details for Spelling Shed will be sent home soon.

Mission in Maths



“You can identify a fluent learner when they have a secure understanding of what they’re doing and why they’re doing it”. Gill Knight

Building mathematical fluency is crucial for children’s overall understanding of Maths.

Children will be given a **Mission in Maths Gameboard** to encourage regular focus on key Maths facts.

Certificates will be awarded for completion of the ‘missions’.

Wellbeing



- Greeted at the gate or door by familiar adult
- Emotions Check-In
- Calm corner
- Five to Thrive (mind, body, soul)
- Movement within lessons
- Visual timetable
- Clear routines and expectations



Behaviour



- High expectations of behaviour
- Recognition Board
- Individual incidents dealt with separately
- Choice Card System
- Encourage children to reflect on their behaviour, take ownership and plan for their own improvements
- High 5 is our celebration of good behaviour shown during the week
- Mission in Action tickets given for 'above and beyond' winners go and have Hot Chocolate
- House Points
- Importance of school and home working together - please raise any concerns directly with me, where possible

P.E.



- P.E. is on Monday and Thursday
- Children may wear the school tracksuit on these days. We ask that children do not wear their own leggings, sports tops etc.
- All children must participate in PE as part of the curriculum



Health and Safety

- Please ensure long hair is tied back at all times.
- No earrings in EYFS and KSI
- Only prescribed medicine to be administered in school, a signed form must be completed which is available from the school office
- Please attend to head-lice immediately
- Online Safety - please follow age-appropriate guidelines at all times - safeguarding!
- We do practice both fire drills and lockdown procedures - both of these will be practiced very quickly in the next couple of weeks. We do pre-warn children for the first drill.
- Please update us if somebody different is collecting your child from school



Health and Safety

- At the end of the day the school gate can be very busy. Please try to come forward when you see your child's class being dismissed. We will only send your child to you when we have made eye contact and can see that you are within the fencing. We cannot send children out onto the carpark.
- Please update us if somebody different is collecting your child from school.

Drinks & Snacks



- Children are encouraged to have a bottle of water in school each day and take regular sips to keep hydrated. It's important that children can open their bottle easily and can refill it independently.
- Infant children access the fruit and vegetable daily scheme with our rolling snack area.
- No other snacks are needed in school.
- Milk can be purchased for all children via CoolMilk. Please see school office for further information.

School Uniform



- High standards throughout the year
- Children need a coat every day as we go outside in all weather
- Please keep hair accessories very simple and in school colours or black/white (no decorative accessories)
- Black school shoes. Trainers can be worn on PE days only.
- Name labels - please label absolutely everything and keep topping up during the year
- Children can choose to wear slippers in the classroom
- Wellies are needed in school to be kept in lockers for when needed

SRE in Year 1



In the Summer Term, as part of the Science Curriculum, children will be taught to: -

- identify, name, draw and label the basic parts of the human body and say which part of the body is associated with each sense

As part of the SRE Curriculum, children will be taught: -

- the correct names for the main body parts of boys and girls
- to identify the physical similarities and differences between boys and girls
- to recognise and use the correct names for main parts of the body including private parts.

Attendance

- Regular attendance and punctuality matters!
- Learning starts straight away - we have a very full timetable
- Obviously, if children are poorly they cannot attend and we understand this but do encourage children to get in good habits
- Please telephone the school office as early as possible if children are not attending and use the absence line
- Children who have had vomiting or diarrhoea must stay off school for **24 hours** to limit the opportunity to spread this
- We are not allowed to authorise holidays during term-time unless there are particularly exceptional circumstances. Please remember penalty notices are now in place, these are not set by the school but by the Local Authority.

Friends of Salesbury School



- First meeting is on Tuesday, 9th September 6.00pm- meetings are very informal but give opportunities to chat about the extras we can provide for our children.
- Some are fundraising events; others are more social events!



Class Facebook Page

- Invitation to all parents to be part of our closed class Facebook group
- We encourage interaction!
- We share lots of our learning on this page in addition to little reminders

Salesbury CE Moon Year 1 (25-6)

🔒 Private group · 2 members

Questions/Concerns

- Please do get in contact if you have any questions or concerns throughout the year

cummins@Salesbury.lancs.sch.uk

Regular feedback through the year

- Termly Report
- Parents Evening - November, April
- End of year report
- End of Year consultation evening

